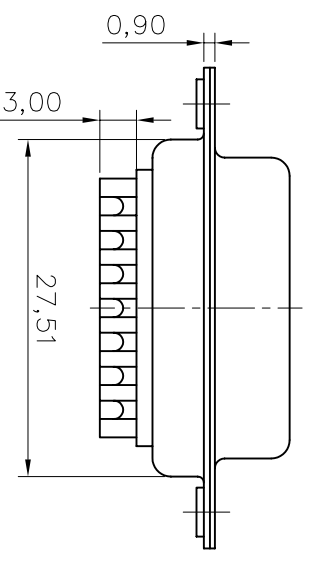
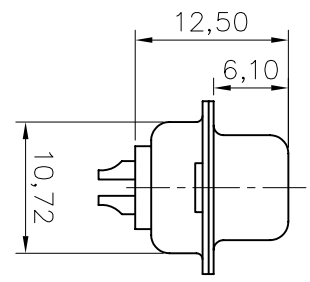
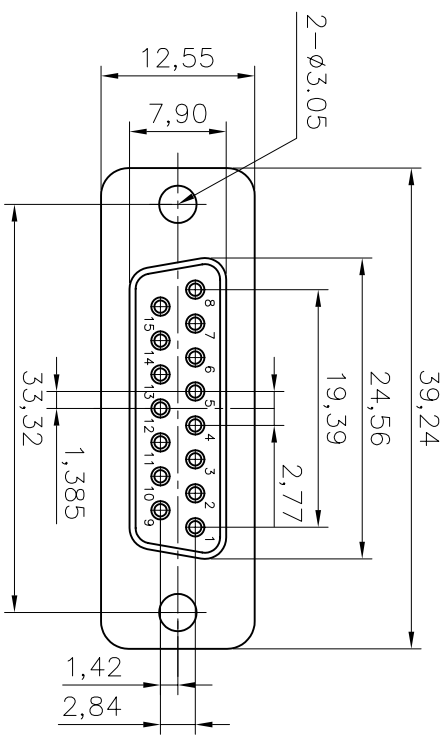


This document is the property of Amphenol Corporation and is delivered on the express condition that it is not to be disclosed, reproduced or used, in whole or in part, for any purpose other than that for which it was originally intended without the prior consent, in writing, of Amphenol Corporation or to use any information in this document.



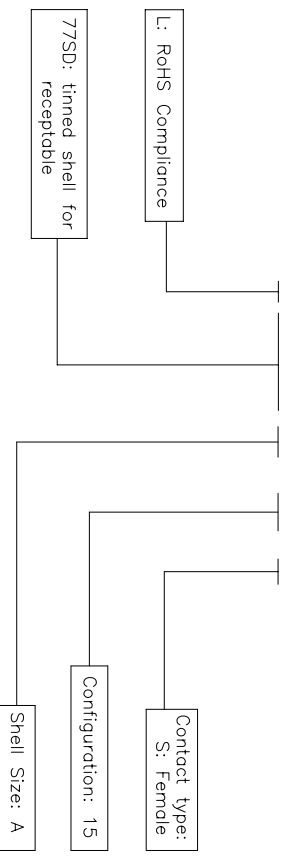
REVISIONS				
S/N	EDN	DESCRIPTION	DATE	APPROVED
A			09/21/07	

**D-SUB TECHNICAL DATA**

SHELL : Steel, 2.5um(100u") min sn over 1.25um(50u") min nickel  
 BODY : Glass filled thermoplastic.  
 Flame retardant to UL94 V-0 Color Black  
 CONTACTS : Phosphor bronze  
 gold flash over 1.25um(50u") min nickel on mating area.  
 2.5um(100u") min sn over 1.25um(50u") min nickel on solder area  
 ELECTRICAL : Voltage rating : 250 V RMS at 50 Hz  
 Current rating : 1A  
 Withstanding Voltage >1000 V RMS at 60 Hz for one minute  
 Insulation resistance >5000 M Ohms  
 Contact resistance 20 mOhms max.  
 CLIMATIC : Temperature range -55 °C up to 125°C  
 MARKING : Amphenol-...(Series No.)  
 Commercial reference  
 Manufacturing date

**PRODUCT CODE**

**L77SDA 15 S**



Amphenol

DIMENSIONS SPECIFIED	
TOLERANCES	METRIC
X	±0.50
XX	±0.30
XXX	±0.20
ANGLES	±1°
FINISHES	2

APPROVAL	DATE
DRAWN	Checked: and/or /21/07
CHECKED	14k. veng /09/21/07

TITLE	
Stamped and Formed connector, SD series	
SIZE	DRAWING NO.
A4	C L77SDA15S
SCALE	NONE
SHEET 1 OF 1	



4 3 2 1