



These new ultra-small, chip trimming capacitors are specifically designed for high stability and heat resistance to maintain excellent characteristic performance after reflow soldering.

FEATURES

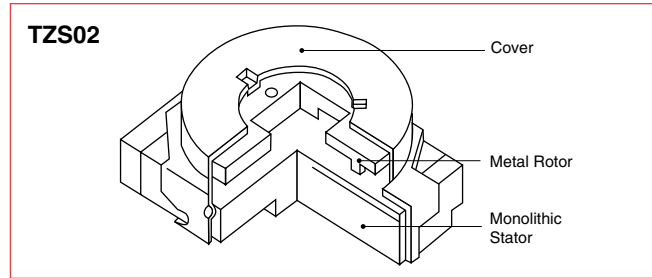
- Ultra small and thin size—TZS02: just 2.2mm x 2.7mm x 0.95mm
TZVY2: just 2.3mm x 3.2mm x 1.25mm
- Newly designed metal rotor and rugged construction with no plastic material
- New shape of cover can improve flux invasion compared with TZV series¹
- Improved adhesion between rotor and stator gives superior stability¹
- Mountable by automatic placer
- Built in capacitor in parallel with trimmer capacitor also available².
- Contact Murata for details.
- Capacitance setting drift within $\pm 1\%$

APPLICATIONS

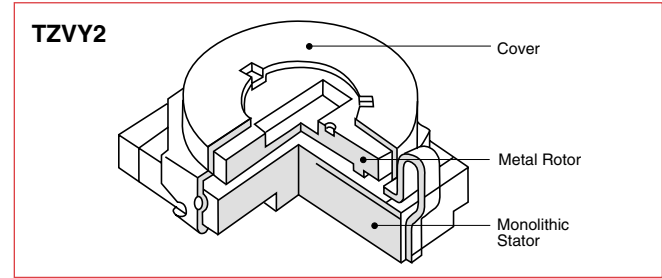
Crystal oscillators and filters; watches¹; pagers; cordless, hand-held and auto telephones²; camcorders, radar detectors, pagers, remote keyless entry system, portable radios¹

¹ TZVY2 only; ² TZS02 only

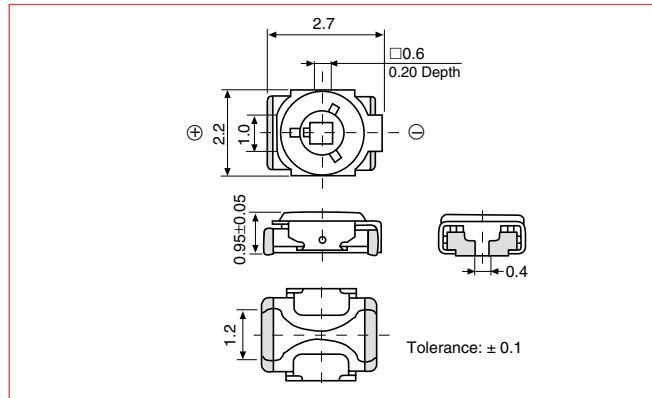
CONSTRUCTION



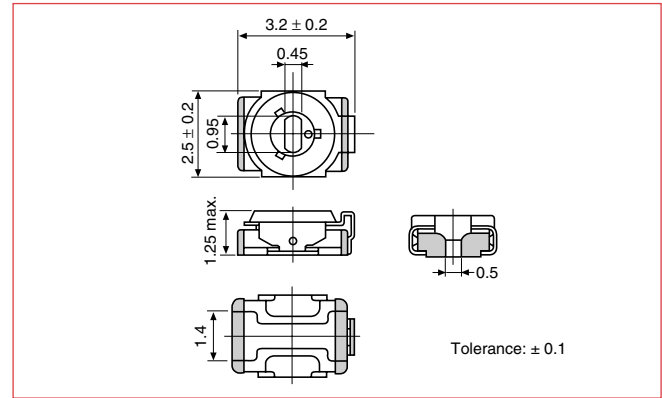
CONSTRUCTION



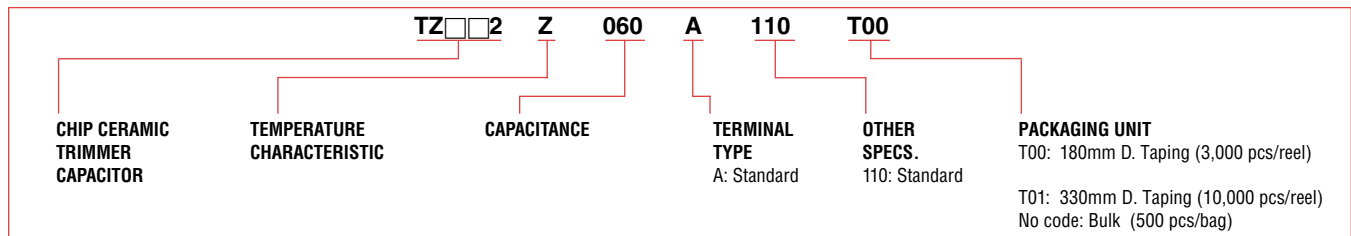
DIMENSIONS: mm



DIMENSIONS: mm



PART NUMBERING SYSTEM



SPECIFICATIONS

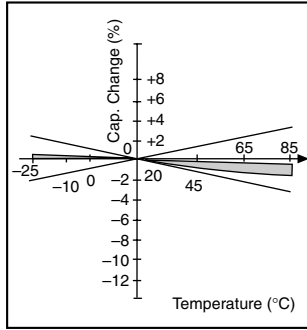
Part Number	Capacitance (pF)		Temperature Coefficient (ppm/°C)	Q (1MHz, C max.)	Working Temperature Range (°C)	Stator Color
	Min. (max.)	Max. (+100%, -0%)				
TZS02Z060A110	3.0	6.0	NPO ± 300 (0 ± 300)	500 min.	-25 to +85	Light Green
TZS02Z100A110	3.5	10.0	NPO ± 300 (0 ± 300)	500 min.	-25 to +85	Light Green
TZS02R200A110	7.0	20.0	N750 ± 500 (-750 ± 500)	500 min.	-25 to +85	Brown
TZVY2Z2R5A110	0.65	2.5	NPO ± 300 (0 ± 300)	200 min.	-25 to +85	White
TZVY2Z030A110	1.5	3.0	NPO ± 300 (0 ± 300)	300 min.	-25 to +85	Light Green
TZVY2Z060A110	2.5	6.0	NPO ± 300 (0 ± 300)	500 min.	-25 to +85	Light Green
TZVY2Z100A110	3.0	10.0	NPO ± 300 (0 ± 300)	500 min.	-25 to +85	Light Green
TZVY2R200A110	4.5	20.0	N750 ± 500 (-750 ± 500)	500 min.	-25 to +85	Brown
TZVY2R250A110	5.5	25.0	N750 ± 500 (-750 ± 500)	300 min.	-25 to +85	Brown
TZVY2R450A110	8.0	45.0	N1000 ± 550 (-1000 ± 500)	300 min.	-25 to +85	Light Brown

• Rated Voltage...25VDC • Withstanding Voltage...55VDC • Insulation Resistance... 10^4 M ohms min. • Driving Torque...0.49 to 4.9mNm (5 to 50g-cm)

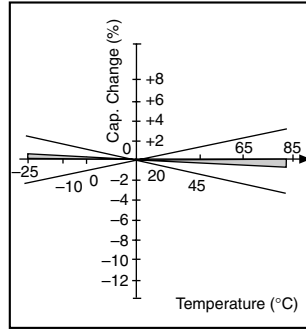
CHARACTERISTICS

Temperature Coefficient Characteristics

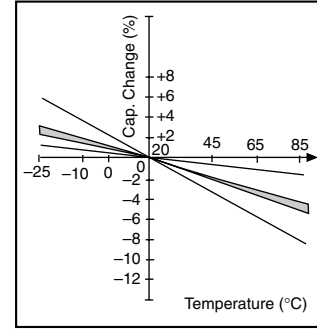
TZS02Z060 (NPO±300ppm/°C)



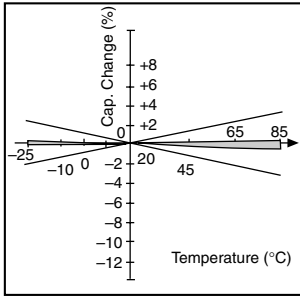
TZS02Z100 (NPO±300ppm/°C)



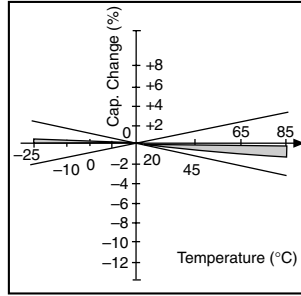
TZS02R200 (N750±500ppm/°C)



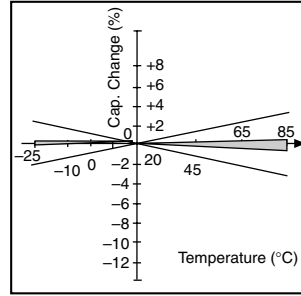
TZVY2Z030 (NPO±300ppm/°C)



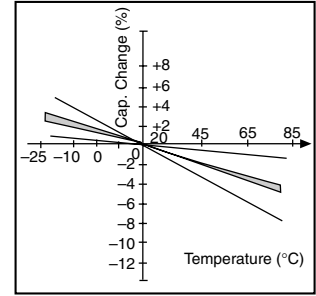
TZVY2Z060 (NPO±300ppm/°C)



TZVY2Z100 (NPO±300ppm/°C)



TZVY2R200 (N750±500ppm/°C)



Q AND CAPACITANCE VS. FREQUENCY CHARACTERISTICS

Characteristics are measured at the maximum rated capacitance value position.

