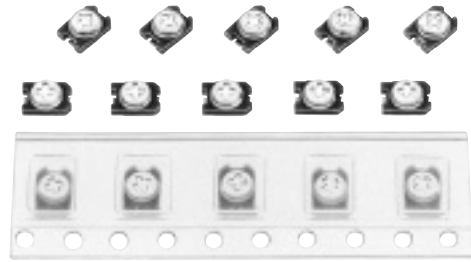


### Chip Type Adjustable (pre-set) Ceramic Capacitors

Series: **K**

Series K are miniature in size, ultra-thin (1.8 mm max. in thickness) type surface mounting devices, and are recommended for miniaturization of electronic equipment.



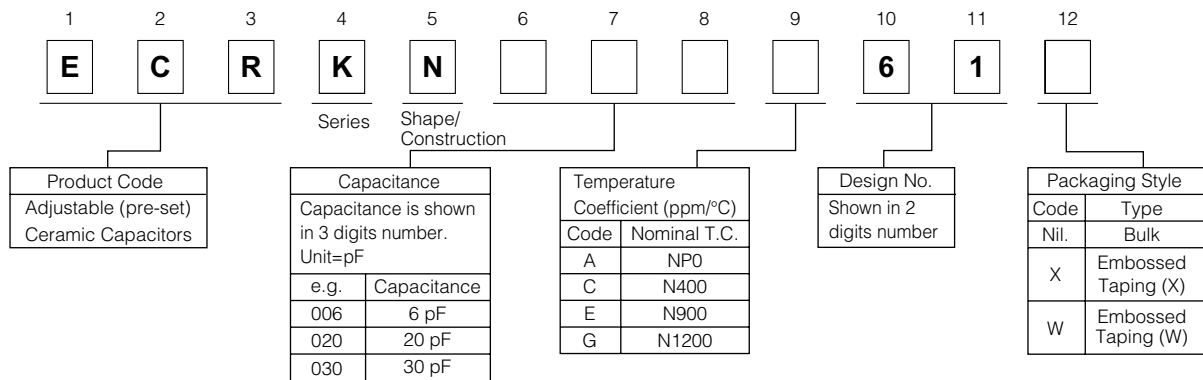
#### ■ Features

- Miniature and ultra-thin type SMD: 3.2×4.5×1.8 max. mm
- Designed for reflow soldering
- Embossed taping types are available for surface mounting
- Easy reading of the capacitance with color-coded case

#### ■ Recommended Applications

- Hybrid IC and micromodules
- Portable radios and portable cassette tape players
- VTR cameras
- Paging systems
- Cordless telephones

#### ■ Explanation of Part Numbers



#### ■ Ratings and Characteristics

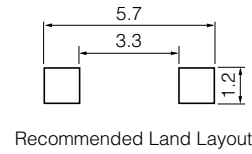
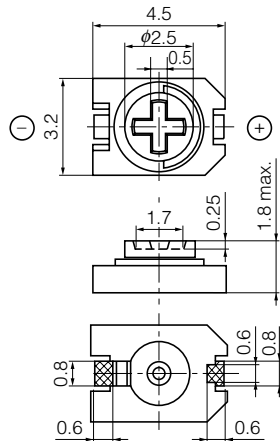
Item	Ratings
Rated Voltage	100 VDC
Dielectric Withstanding Voltage	220 VDC
Insulation Resistance (at C max.)	10 <sup>4</sup> MΩ min. at 100 VDC and 1 minute electrification
Rotation Torque	0.98 to 9.81 mN · m (10 to 100 gf · cm)
Operating Temperature Range	-25 to +85 °C

Part Number	Capacitance (pF)		Temperature Coefficient (ppm/°C)	Q (at 1 MHz, C max.)	Color
	max.	min.			
ECRKN003A61□	3 <sup>+50</sup> <sub>0</sub> %	1.7 max.	NP0±300	500 min.	Brown
ECRKN006A61□	6 <sup>+50</sup> <sub>0</sub> %	2.5 max.	NP0±300		Blue
ECRKN010C61□	10 <sup>+50</sup> <sub>0</sub> %	3.0 max.	N400±400		White
ECRKN020E61□	20 <sup>+50</sup> <sub>0</sub> %	5.0 max.	N900±400	300 min.	Red
ECRKN030G61□	30 <sup>+50</sup> <sub>0</sub> %	6.0 max.	N1200±500		Green

Design and specifications are each subject to change without notice. Ask factory for the current technical specifications before purchase and/or use. Should a safety concern arise regarding this product, please be sure to contact us immediately.

### ■ Dimensions in mm (not to scale)

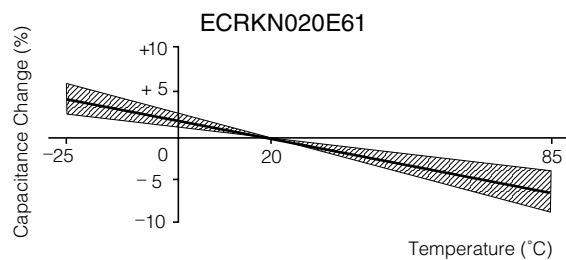
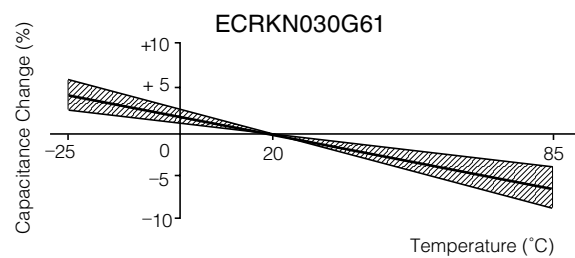
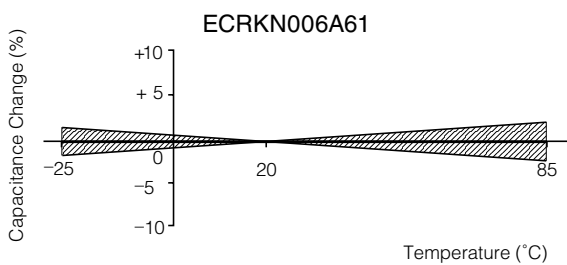
ECRKN□□□□61



effective electrode

### ■ Typical Characteristics

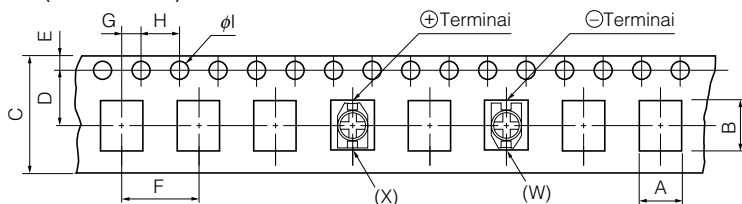
#### Temperature Characteristics



### ■ Packaging Specifications

#### ● Dimensions in mm (not to scale)

Carrier Tape

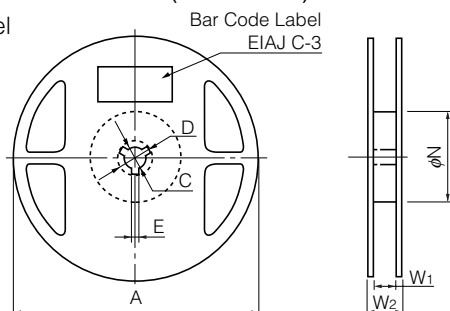


A	B	C	D	E	F	G	H	$\phi l$	K	t
3.6±0.2	4.9±0.2	12.0±0.3	5.5±0.1	1.75±0.10	8.0±0.1	2.0±0.1	4.0±0.1	1.5±0.1	2.4±0.2	0.30±0.05

Taped Type	Part Number
X	ECRKN□□□□61X
W	ECRKN□□□□61W

#### ● Dimensions in mm (not to scale)

Reel



Reusable Reel EIAJ ET-7200 : RRM12B

A	C	D	E	$\phi N$	W <sub>1</sub>	W <sub>2</sub>	Packaging Quantity
180	13	21	2.0	60	13.0	15.4	1000 pcs.